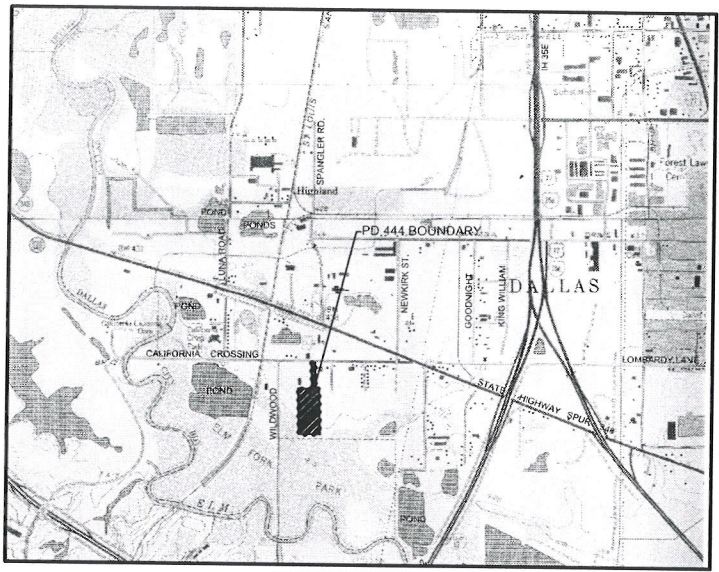
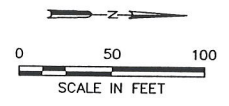
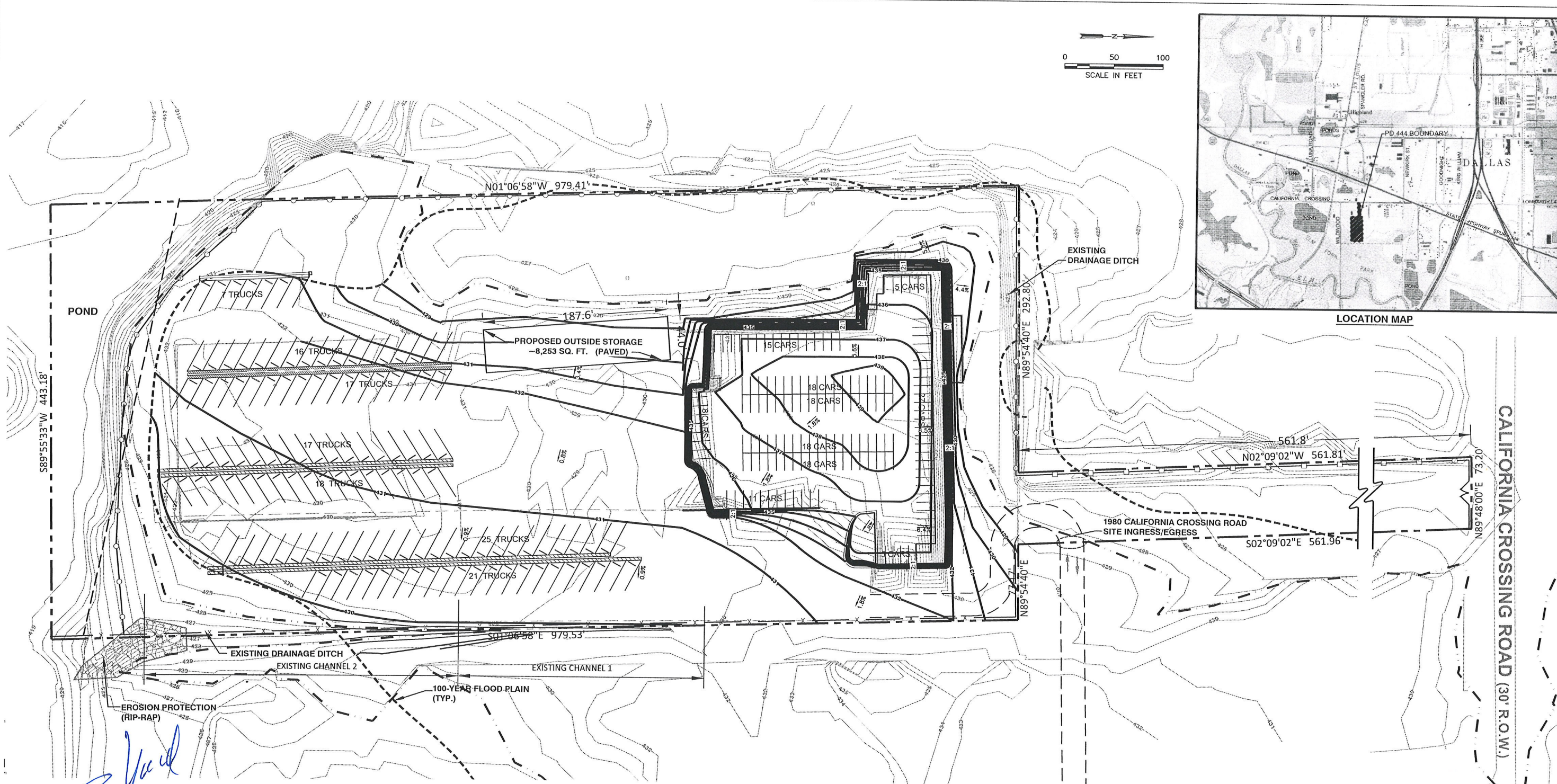
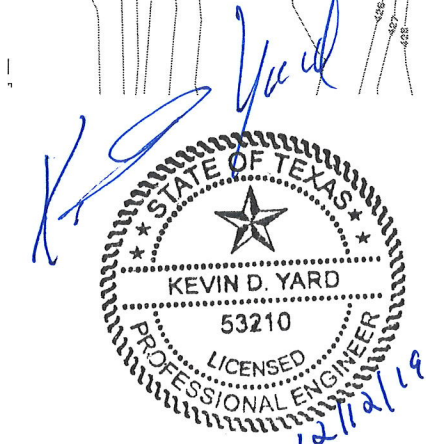


12/3/2019 11:20 AM
 G:\CWD SWPPP\16218013.00 T4 - DRAINAGE DESIGN\DWG\082219\PAVING AND GRADING (REV. 112619) jackson, jermont



LOCATION MAP

CALIFORNIA CROSSING ROAD (30' R.O.W.)



LEGEND	
	PROPERTY BOUNDARY
	EXISTING CONTOUR
	PROPOSED CONTOUR
	100-YEAR FLOODPLAIN
	428.16' MSL CONTOUR
	7' CYCLONE FENCE
	8' CYCLONE FENCE
	PROPOSED 8' CYCLONE FENCE
	CAR PARKING (TYP.) 143 SPACES
	TRUCK PARKING (TYP.) 121 SPACES

- NOTE:
- STORAGE WILL BE LIMITED TO AREAS 2 FEET ABOVE THE 100-YEAR FLOOD SURFACE ELEVATION.
 - ALL CNG LINES WILL BE INSTALLED THROUGH BORING WITH MINIMAL DISTURBANCE TO THE SURFACE.
 - THERE WILL BE NO FILL PLACED IN THE FLOODPLAIN.
 - THERE WILL BE NO FILL PLACED BELOW ELEVATION 428.16' MSL.
 - ALL PARKING AREAS ARE PROPOSED.

OWNER
 TONG DEVELOPMENT, LLC
 2010 CALIFORNIA CROSSING
 DALLAS, TEXAS 75220
 (972) 392-3900
 CONTACT: GREG A. ROEMER

PREPARER
 SCS ENGINEERS
 1901 CENTRAL DRIVE,
 SUITE 550
 BEDFORD, TEXAS 76021
 (817) 571-2288
 CONTACT: KEVIN YARD, P.E.

APPLICANT
 TONG DEVELOPMENT, LLC
 2010 CALIFORNIA CROSSING
 DALLAS, TEXAS 75220
 (972) 392-3900
 CONTACT: GREG A. ROEMER

CASE NO: Z189-347(AU)

REV	DATE	DESCRIPTION	OWN BY	DES BY	CHK BY	APP BY

DATE OF ISSUE: 08/2019
 OWN BY: JIJ
 DES BY: KDY
 CHK BY: JAA
 APP BY: KDY

SCS ENGINEERS
 STEARNS, CONRAD AND SCHMIDT
 CONSULTING ENGINEERS
 1901 CENTRAL DRIVE, SUITE 550, BEDFORD, TX 76021
 PH (817) 571-2288 FAX NO. (817) 571-2188

TONG DEVELOPMENT, LLC
 DALLAS, TEXAS
 1980 CALIFORNIA CROSSING
 PD 444 AMENDMENT
 DEVELOPMENT PLAN
 SITE PLAN

DRAWING NO.
 1
 16218013.00 T10